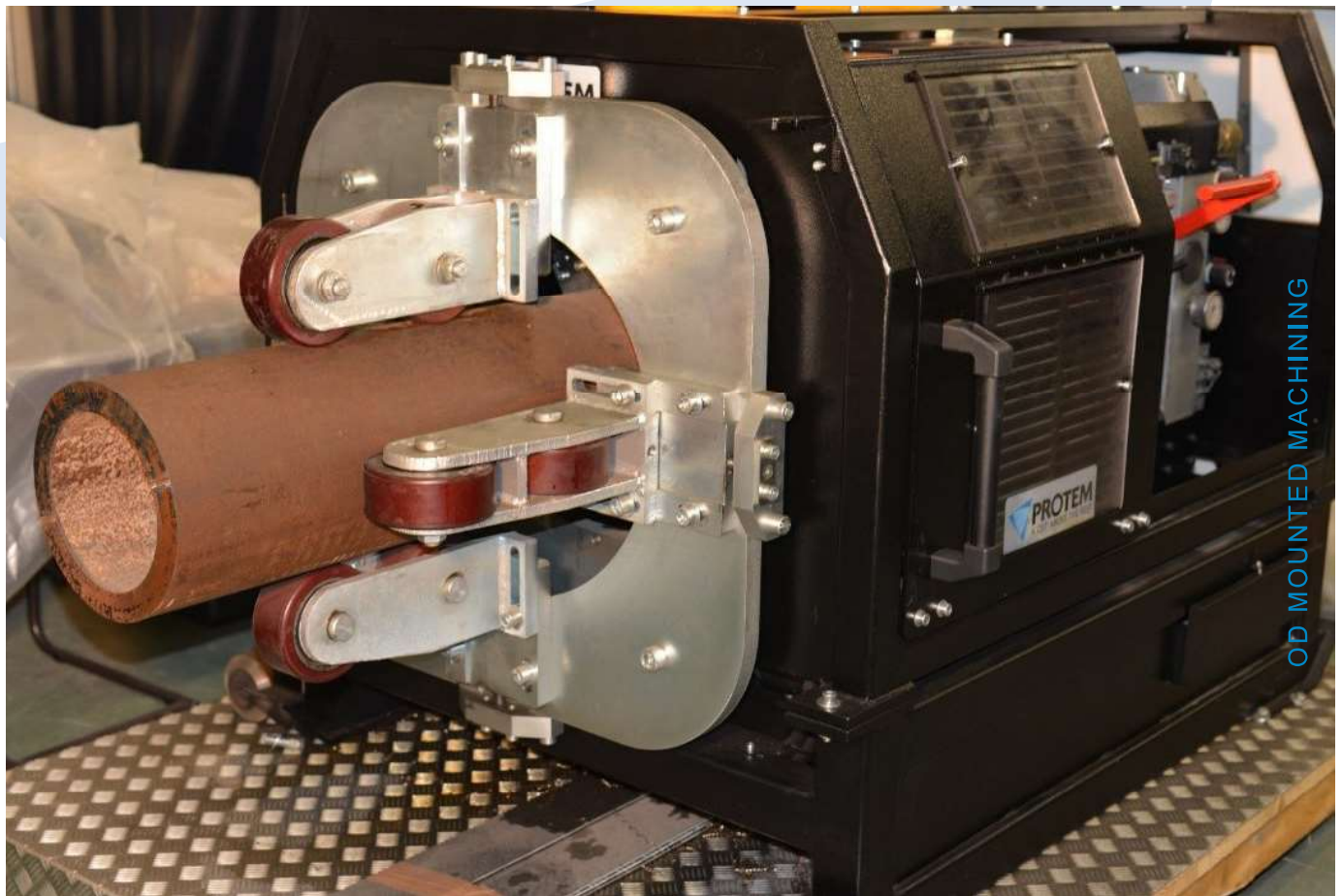


OHSB SERIES

OD MOUNTED TUBE AND PIPE BEVELING AND FACING MACHINE

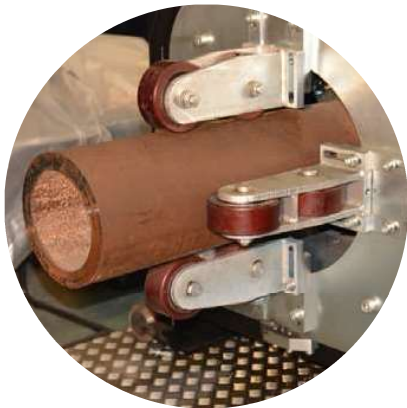
Ø152.4 mm - 355.6 mm
Ø 6" - 14"



OHSB Series	Machining Capacity	
OHSB	152.4 - 355.6 mm	6" - 14"
OHSB-C	152.4 - 355.6 mm	6" - 14"

INDUSTRIES:

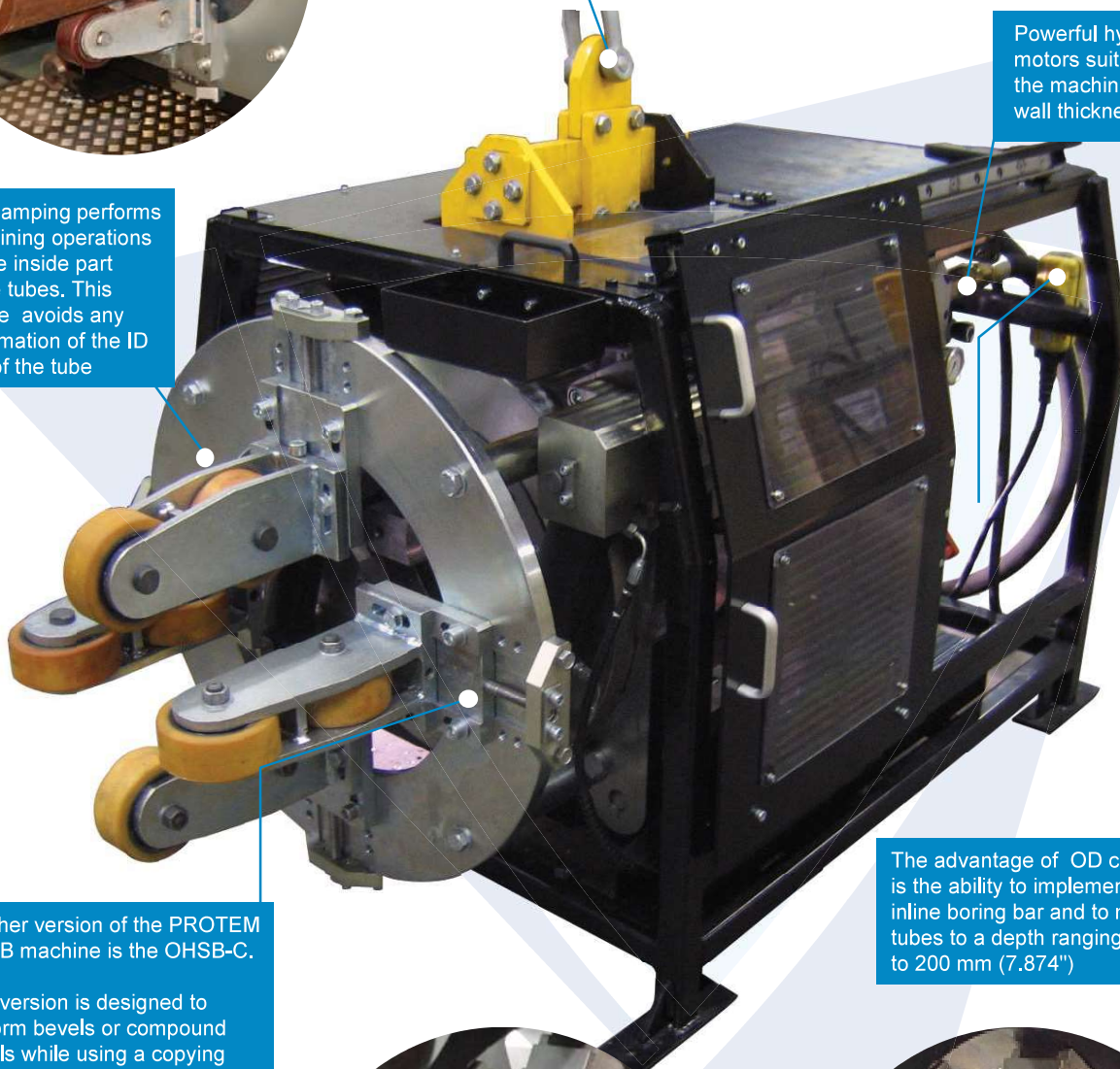
Shipbuilding	Tube Manufacturers
Spoolbases	Pipelines Construction



Easy to move from one working place to another, the OHSB machines can also be used as a stationary machine. Handling and set-up are simple and easy.

Powerful hydraulic motors suitable for the machining of large wall thicknesses.

OD clamping performs machining operations on the inside part of the tubes. This device avoids any deformation of the ID part of the tube



Another version of the PROTEM OHSB machine is the OHSB-C.

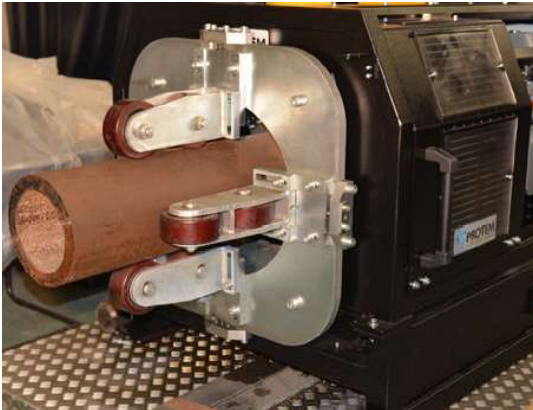
This version is designed to perform bevels or compound bevels while using a copying machining process. A carriage with radial hydraulic movement, mounted on the tool holder, performs beveling operations while using a copying cam.

The advantage of OD clamping is the ability to implement an inline boring bar and to machine tubes to a depth ranging from 0 to 200 mm (7.874")



OHSB Standard

Ø 152.4 - 355.6 mm (6" - 14")



DESCRIPTION:

The OHSB is a portable OD Mounted tube and pipe beveling and facing machine.

The OHSB features an OD clamping system for machining pipes with diameters ranging from 6 to 14" OD with wall thicknesses up to 60 mm.

The machine is perfect for use in the following operations:

- Facing
- Beveling : I, V, J, X shape or compounded bevels
- Counterboring
- Repeatable high quality surface

High performance. Perfectly suitable for manual or automated welding processes.



ORDER NO.	DESCRIPTION
O-HSB-6-14	OHSB Outside clamping beveling and surfacing unit for tubes ranging from 6" to 14"

OHSB MACHINING:

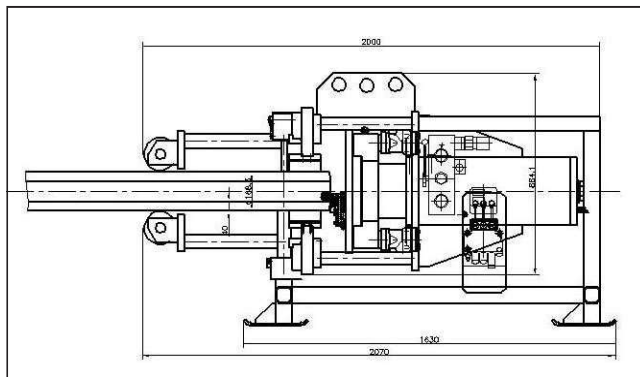


Beveling	Cutting	Facing	Counterboring	Surfacing
✓	✗	✓	✓	✗

TECHNICAL FEATURES:

Machine	OHSB	
Mechanical tool plate feed movement	200 mm	
	7.874"	
Gripping jaw movement	50 mm / Ø	
	1.968" / Ø	
Clamping jack movement	125 mm	
	4.921"	
	Minimum	Maximum
Tool plate rotation speed	10 tr/mn	230 tr/mn
Advance speed of tool plate holders	0.05 mm (.002")/tr	0.3 mm (.012")/tr
Clamping jack supply pressure	-	110 bar
		1 595 psi
Plate rotation drive supply pressure	-	80 bar
		1 160 psi
Plate rotation drive supply pressure	-	80 bar
		1 160 psi
Inside boring capacity	127 mm	218.44 mm
	5"	8.6"
Length of bore	0	152.4 mm
		6"

DIMENSIONS:



OHSB-C-COPIAGE

Ø 152.4 - 355.6 mm (6" - 14")

DESCRIPTION:

Another version of the PROTEM OHSB is the PROTEM- OHSB-C.

This version is designed to carry out bevels or compound bevels by copying. A carriage with hydraulic radial movement, mounted on the tool holder plate performs beveling operations while using a copying cam. The tool holder is equipped with carbide tips.

Maximum wall thickness of the tube: maximum 60 mm (2.362") on a height of chamfer lower than 30 mm (1.181") and a maximum angle of 37°.

The carriage is provided with a copying roller acting on the internal diameter of the tube.

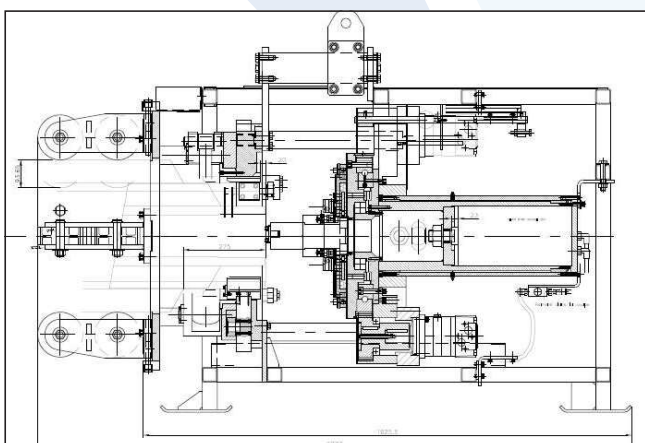
Minimum inside copying Ø: 100 mm (3.937")

Maximum inside copying Ø: 255 mm (10.039")

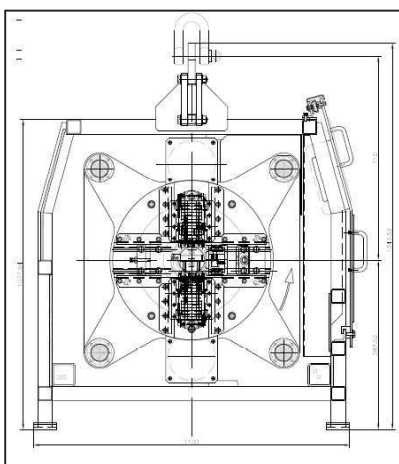
ORDER NO.	DESCRIPTION
O-HSB-C-6-14	O-HSB-C-6-14 Outside clamping beveling and surfacing unit for tubes of 6" to 14" with copying carriage

Beveling	Cutting	Facing	Counterboring	Surfacing
✓	✗	✓	✓	✗

DIMENSIONS:



DIMENSIONS VIEW 2:



TECHNICAL FEATURES:

Machine	OHSB-C-COPIAGE
Machining Capacity	Maximum thickness 60 mm (2.362"); maximum angle 37°
Clamping capacity	152.4 mm (6") 355.6 mm (14")
Maximum tool holder plate speed	170 rpm
Feed	Hydraulic actuating cylinder
Stroke	Axial 150 mm Radial 80 mm
Drive Power	Hydraulic

OPTIONS:

ORDER NO.	DESCRIPTION
OHSB-C-6-14-ME	O-HSB-C-6-14-ME Enveloping jaws (set of 4 jaws)
OHSB-C-6-14-BA	O-HSB-C-6-14-BA Boring bar + accessories L = 200 mm (7.874")
O-HSB-C-PO/3005	Counter boring carbide insert holder 15°
O-HSB-C-PO/3026	Copying carbide insert holder 30°
OHSB-K01	O-HSB-K01 Wooden crate
OHSB-K02	O-HSB-K02 Wooden crate for several uses
OHSB-K03	O-HSB-K03 Wooden Crate with shrink wrapping (Recommended for shipment by boat)