

PETOL SUCKEROD ELEVATOR

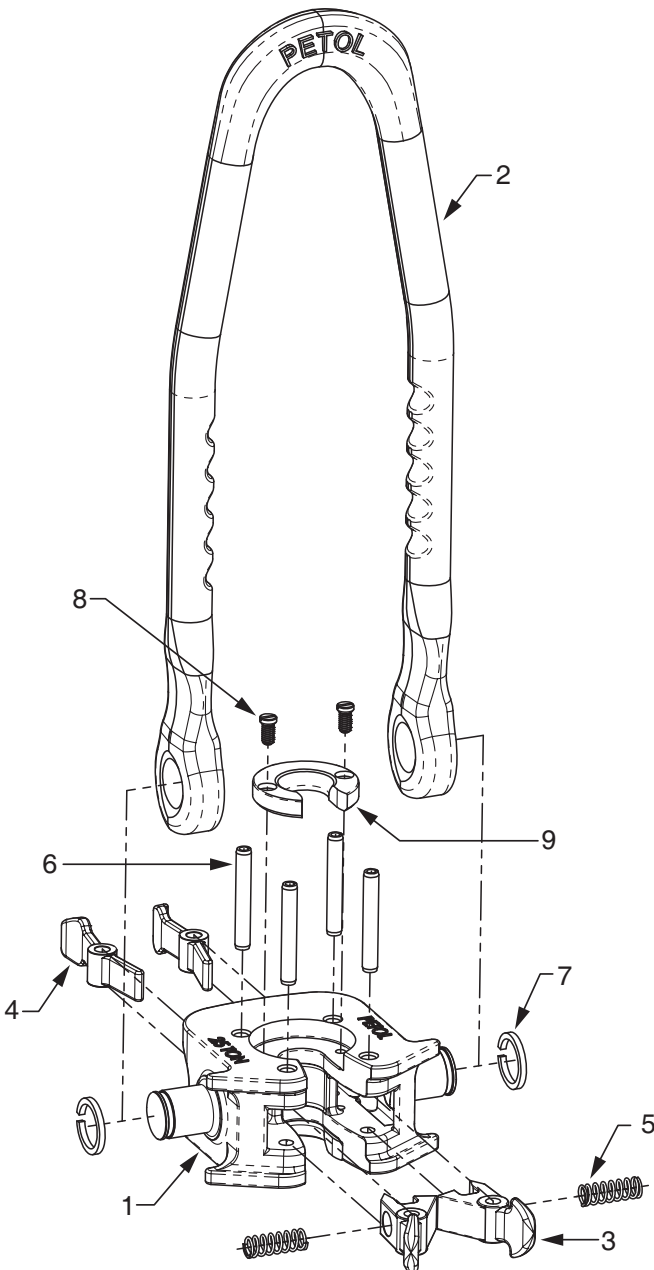
PETOL SUCKEROD ELEVATORS are manufactured to the highest standards of quality. These plate-type elevators are made from heat-treated alloy steel for strength and durability and are rated for 25 tons.

CATALOG NO.	ROD SIZE	WEIGHT	RATED LOAD
REA025	(see plates below)	30 lbs.	25 tons
PLATE INSERTS			
REI025-058	5/8", 3/4"	8 ozs.	---
REI025-034	3/4", 7/8"	8 ozs.	---
REI025-100	1"	8 ozs.	---

Note: Plate Inserts are sold separate from Rod Elevator.



WARNING! Improper use of sucker rod elevators may result in INJURY OR DEATH!
Do Not Exceed Rated Load of 25 Tons!
Follow safe practices listed in Data Book.



KEY NO.	ITEM DESCRIPTION	NO. REQ'D.
1	BODY	1
2	HANDLE	1
3	FRONT LATCH	2
4	REAR LATCH	2
5	SPRING	2
6	LATCH PIN	4
7	RETAINING COLLAR	2
8	INSERT SCREW	4
9	PLATE INSERT	2